



Serving Industry Since 1967

AmketteAnalytics  
Limited

Endless possibilities...



begin here...

PRODUCT  
CATALOG



Serving Industry Since 1967

*“Constantly challenging the status quo and pushing boundaries leads to transformative growth.”*

# Our Corporation

ANM Alliance

ANM Alliance is a virtual repository of technology and an ideal knowledge partner providing quality solutions from Simulation to Site.

Our domain of expertise spans from the Laboratory to the Process industry as we offer exemplary solutions that encompass the varied needs in the Simulation to Site spectrum.

ANM Alliance comprises of lucrative SBUs derived through Team efforts of more than 100 colleagues working together.

ANM Alliance strategizes host of initiatives which include integrated backup services for the entire Team, warehousing site along with virtual warehousing, ERP and CRM.

We continually leverage technology in order to remain a lean and proactive Organization to endorse enhanced Customer service and satisfaction. Our nationwide network presence ensures prompt services to our Customers.

Many of ANM Alliance’s achievements today are a result of foresight, the ability to forecast Customer requirement and being on hand with already technological solution.

ANM Alliance Group owes its development to the visionary Founder, Late **Shri Arvind N. Mehta** – a man of simple living and high thinking, who set the course which the Group is following, to this day.

We continuously strive to become a responsible corporate citizen contributing significantly to the scientific, industrial and economic advancement of the Country.

Amkette Analytics  
Limited



ANM Industries

SYNERGY  
— TECHNO SUPPORT & SOLUTIONS LLP —

ANM HOUSE

## OUR VISION



To be the finest skills - based total solution provider for turnkey projects, delighting our customers.

## OUR MISSION



The management team will focus on delivering great value to customers by developing high calibre professional skills in core competence and representing world-class instrumentation and automation products.

## OUR VALUES



- Integrity and honesty
- Passion for customers, for our partners and technology
- Openness and respectfulness
- Taking on big challenges
- Constructive self-criticism, self- improvement and personal excellence
- Accountability towards customers, partners and employees for commitments, results and quality

## OUR CORE COMPETENCIES



- Project management
- System integration and maintenance
- Delivering the best solutions for MEP



## INDEX

### SHIMADZU Excellence in Science

<b>Electronic Balances</b> .....	<b>01 - 08</b>
Semi-micro & Analytical Balance.....	02
Top Loading Balance.....	03
Analytical & Top Loading Balance.....	04
Moisture Balance .....	05
Accessories.....	06
Texture Analyzer.....	07
Jigs For Evaluating Textures .....	08

### LAMY RHEOLOGY INSTRUMENTS

<b>Viscosity, Rheology &amp; Texture</b> .....	<b>09 - 28</b>
B-One Plus.....	10
First Plus.....	11
First Pro Plus.....	12
First Prodig.....	13
First Prodig CP1000.....	14
RM 100 Plus.....	15
RM 100 CP-1000 Plus.....	16
RM 100 CP-2000 Plus Cone & Plate Viscometer.....	17
GT 300 Plus Gel Timer.....	18
GT 300 Prodig Gel Timer.....	19
Portable B-One Viscometer.....	20
Portable RM-100 - On-Line / Process Viscometer.....	20
RM 100i - In-Line / Process Viscometer.....	21
RM 100 L - In-Line / Process Viscometer.....	21
RM 200 Plus Rheometer.....	22
RM 200 CP-4000 Plus Rheometer.....	22
DSR 500 Rheometer.....	23
DSR 500 CP-4000 Plus Rheometer.....	23
TX 700 Texture Analyzer.....	24
Thermocell Package.....	25
Helipro.....	25
Accessories.....	26
Viscosity Standard.....	27
Rheotex Software.....	28

### BINDER Best conditions for your success

<b>Incubator, Oven, Climate Chamber &amp; Freezer</b> .....	<b>29-38</b>
Hot Air Oven.....	30
Vacuum Oven.....	31
Incubator - Microbiological.....	32
Incubator - Cooled (BOD).....	33
Photo-Stability Chamber.....	34
Growth Chamber.....	35
Stability Chamber.....	36
Stability Chambers - Eco & Solidline.....	37
Ultra Low Temperature Freezers.....	38

### 

<b>Laboratory Furnaces</b> .....	<b>39-46</b>
Muffle Furnaces.....	40-41
Ashing Furnaces.....	42
Tube Furnaces.....	43
Split-Type Tube Furnaces.....	44
Gas Supply System.....	45
Forced Convection Chamber Furnaces.....	46

### GETINGE \* LANCER | ULTIMA



### Stanford Research Systems

### T-Scale

<b>Laboratory Instrument</b> .....	<b>47-54</b>
Lancer Ultima 815LX.....	48
Lancer 1300LX.....	48
Lancer 1600LX.....	49
Lancer accessories.....	49-50
Ultrasonic Cleaner Powersonic 600 Series.....	51
Ultrasonic Pipette Cleaner Powersonic 212.....	51
Melting Point Apparatus - Automated.....	52
Q7 Series Benchtop Scales.....	53
S29 Series Waterproof Scales.....	53
BWS Waterproof Platform Scales.....	54
BW Series Platform Scales.....	54

### 

<b>Autoclaves</b> .....	<b>55-62</b>
HV-II Series.....	56
HG-II Series.....	57
HV Hiclave Series.....	58
HVE Economical Hiclave Series.....	59
HVA Hiclave Series.....	60
HVN Series.....	61
HVP Hiclave Series.....	62

## interscience

<b>Scientific Equipment for Microbiology</b> .....	<b>63-68</b>
Sampling Bags for Homogenizer / Lab Blender.....	64
Lab Blender.....	65
Scan Station.....	66
Semi-Automatic Colony Counter.....	67
Manual Colony Counter.....	68



**novasina**  
The Art of Precision Measurement

**Water Activity Meter .....69-74**  
 Lab Master Neo .....70  
 Lab Touch .....71  
 Lab Swift .....72  
 Lab Start .....73  
 SAL-T Standards.....74

**GRAM**  
Biostorage you can depend on

**Refrigerators & Freezers .....75-80**  
 Bio Plus .....76  
 Bio Midi .....77  
 Bio Compact II .....78  
 Bio Compact II Combination.....79  
 Bio Basic .....80

**B SCIENCE**

**Refrigerators & Freezers .....81-84**  
 ULT -86°C Freezers.....82  
 Premium Biomedical -30°C Freezers .....82  
 Lab -25°C Freezers .....83  
 Lab Combi +1°C / +10°C & -25°C / -10°C .....83  
 Lab +1°C / +10°C Refrigerators .....84

**wstyler**

**Test Sieves & Sieve Shakers.....85-88**  
 RO-TAP® RX-29 and RX-30 Models .....86  
 RO-TAP® E Sieve Shakers .....87  
 VariSifter Sonic Separator .....88

**PolyScience®**  
Temperature Control Solutions®

**Chillers & Baths .....89-98**  
 Selection: Circulating Water Baths .....90  
 Temperature Controllers for Circulating Baths .....91  
 Circulating Baths.....92  
 General Purpose Water Baths .....92  
 Selection: Chillers .....93  
 DuraChill Chillers .....94  
 Immersion Probe Coolers .....95  
 DuraChill® Benchtop Chillers .....96  
 Recirculating Coolers .....97  
 Application - Specific Bath.....98

**AM ANM Industries**

**Laboratory Instruments .....99-118**  
 Circulating / Refrigerated Water Bath .....100-101  
 Ultrasonic Cleaner .....102  
 Freeze Dryer .....103  
 Electromagnetic Sieve Shaker .....104  
 Test Sieve.....105-106  
 Vacuum Oven, Vacuum Pump .....107  
 Hot Plate Magnetic Stirrer .....108  
 Overhead Stirrer.....109  
 Vortex Mixer .....110  
 Personal Centrifuges .....111  
 Abel Flash Point Apparatus .....112  
 Pensky Martens Closed Cup Flash Point Apparatus .....112  
 Cleveland Open Cup Flash Point Apparatus - Digital .....112  
 Kinematic Viscosity Bath .....113  
 Data Logger .....114  
 Universal Statistic Printer .....115  
 Saybolt Chromometer .....116  
 H2O Stabilizer .....116  
 Foamless Detergent & Neutralizer for Lab Glassware  
 Washer / Dryer .....116  
 U Tube Viscometer .....117  
 Leak Test Apparatus .....118

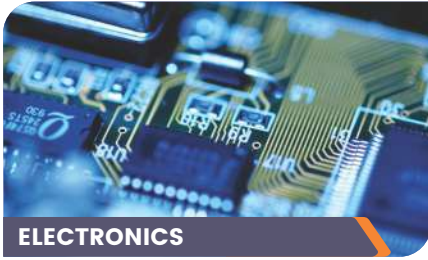
**CYBERLAB™**

**Chromatography Consumables .....119-125**  
 9mm LC Clean Bonded Screw Cap.....120  
 9mm Ultra Mass Spec Certified Screw Cap with Septa ...120  
 9mm Y Pre-Slit Silicon / Red PTFE Septa.....120  
 9mm Magnetic Screw Cap.....120  
 9mm Screw Top Vials, Cap & Septa .....121  
 Inserts.....121  
 8mm Screw Top Vials, Cap & Septa .....121  
 11mm Snap Top Vials, Cap & Septa .....122  
 11mm Crimp Top Vials, Cap & Septa .....122  
 13mm Screw Top Vial, Cap & Septa.....122  
 1ml Shell Vial .....122  
 Headspace Vials, Cap & Septa .....123  
 Crimper & Decapper.....123  
 20ml Headspace Vials, Cap & Septa .....123  
 18mm PolyMag Screw Cap with SPME Microcenter Septa ..124  
 Smart Septa (RFID) .....124  
 EPA / TOC Vial Kit (Certified & Pre-assembled) .....124  
 D2 Lamp .....125

**TRAJAN | CRS | SGE Syringes**  
A TRAJAN Brand

PEEK Tubing .....126  
 Manual / Electronic Crimper & Decapper .....127  
 GC Septa.....128-130  
 Ferrule .....131  
 Inlet Liner .....132  
 General Purpose Manual Syringes .....133  
 GC Autosampler Syringe.....134  
 Capillary Columns.....135

# MARKET SEGMENTS



**ELECTRONICS**



**ENVIRONMENT**



**HEALTH & BIO-MEDICAL**



**CHEMICALS**



**BIOTECH**



**WATER TREATMENT**



**LIFE SCIENCE**



**POLLUTION CONTROL**



**LABORATORY**



**RESINS, PAINTS & COATING**



**PETROLEUM**



**HYDROCARBONS**



**AUTOMOBILES**



**PHARMACEUTICALS**



**FOOD & BEVERAGES**



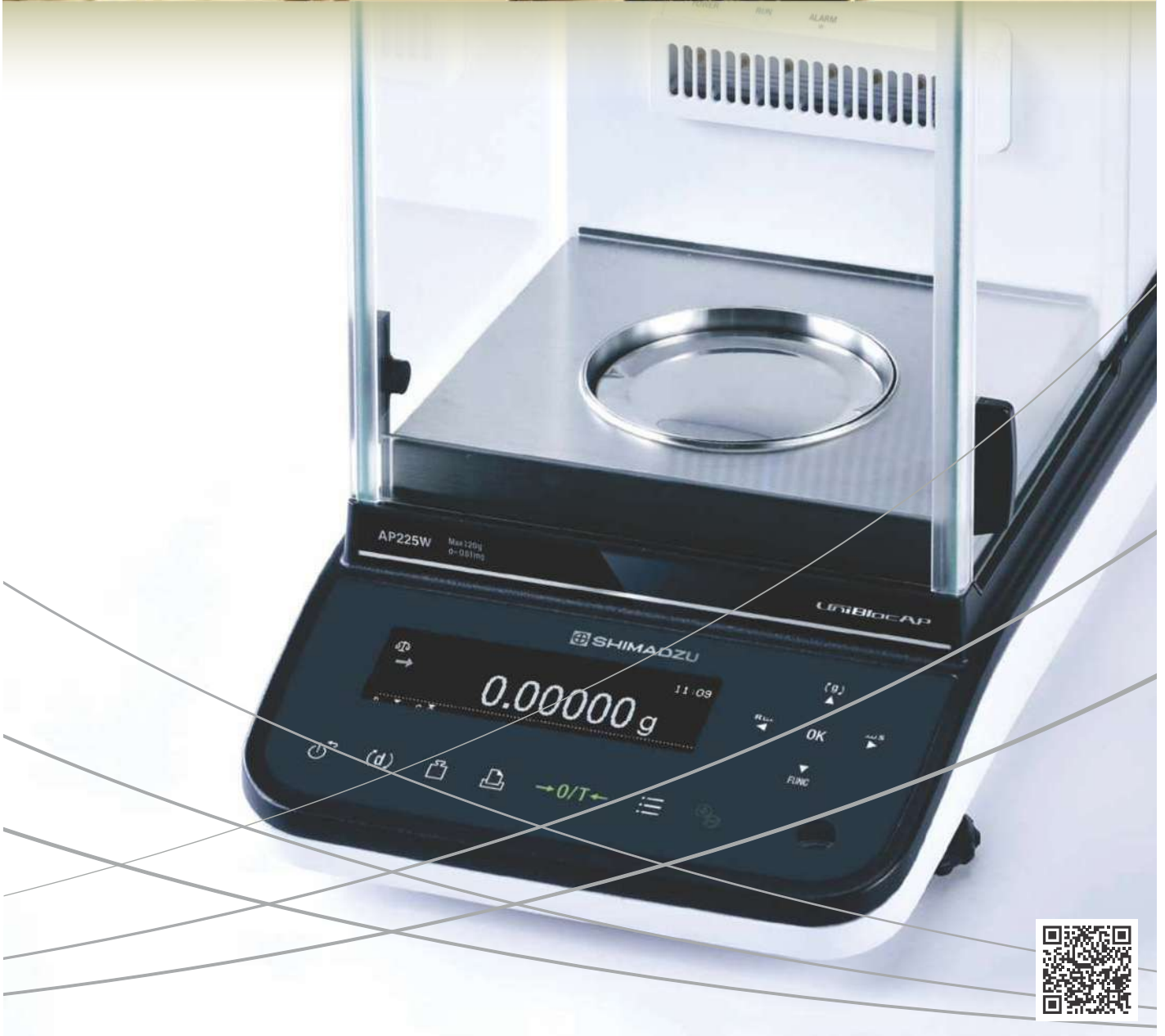
**ENERGY & POWER**



**ASPHALT**



# Electronic Balances



Since 1967

SEMI-MICRO & ANALYTICAL BALANCE



**AP-WD SERIES**

Advanced Performance UniBloc Semi-micro Balances provide High-Speed Response and Stability. Available in super range and dual range.

- 21 CFR Part 11 Compliant with Lab Solutions Software.
- Variety of Accessories suitable for semi-micro measurements.
- Buffer Solution and Sample Preparation modes for HPLC Users(only in APW & APWD Series Model).
- RS232C Interface.
- User ID and Password Management.
- Minimum Measurement Value (only in APW Series Model).
- Periodic Inspection Support Function (only in APW & APWD Series Model).

Model	AP225W	AP135W	AP225WD-AD	AP225WD	AP125WD-AD	AP125WD	AP324X	AP224X
Capacity	220 g	135 g	220 g / 102 g		120 g / 52 g		320 g	220 g
Minimum Display	0.01 mg		0.1 mg / 0.01 mg				0.1 mg	
Door	Manual		Auto	Manual	Auto	Manual	Manual	
Repeatability (at weighing capacity)	0.015 mg (to 20 g) 0.03 mg (to 100 g) 0.05 mg (to weighing capacity)	0.05 mg	0.1 mg / 0.05 mg		0.1 mg / 0.02 mg		0.1 mg	
Linearity	±0.1 mg		±0.2 mg / ±0.1 mg		±0.2 mg / ±0.05 mg		±0.3 mg	±0.2 mg
Response Time	8 sec.		2 sec. / 8 sec.				2 sec.	
Sensitivity Stability Against Temperature Range	±2 ppm / °C (10 to 30°C)							
Pan Size	Approx: 91 mm dia							
Weight (Approx)	7.9 kg	7.9 kg	9.7 kg	7.9 kg	9.7 kg	7.9 kg	7.0 kg	



**ELECTRONIC TOP LOADING BALANCE**



**UP SERIES**

Superior Response Significantly Increases Weighing Efficiency.

- Capacity range: 220g to 8.2kg.
- Readability: 0.001g, 0.01g and 0.1g.
- Significantly improved response time of approximately 1 second provides fastest response performance in its class.
- Full Aluminum Die Cast Housing Provides Excellent Chemical Resistance.
- Balance Keys Weighing Data Collection Software.
- Using the highly impact-resistant UniBloc sensor minimizes downtime due to malfunctions.
- UP series balances have been shown to operate with PLCs from major companies.
- Addition of ionizer increases measurement reliability.

**“X” Series with Internal Calibration Weights**

Model	UP223X	UP423X	UP623X	UP823X	UP1023X	UP2202X	UP4202X	UP6202X	UP422X	UP822X	UP8201X
Capacity	220 g	420 g	620 g	820 g	1020 g	2200 g	4200 g	6200 g	420 g	820 g	8200 g
Minimum Display	0.001 g					0.01 g					0.1 g
Repeatability (at Weighing Capacity)	≤ 0.001 g					≤ 0.01 g			≤ 0.008 g		≤ 0.08 g
Linearity	± 0.002 g		± 0.003 g		± 0.02 g			± 0.01 g		± 0.1 g	
Response Time <sup>(*)</sup>	Approx. 1 sec.								Approx. 0.6 to 1.0 sec.		
Sensitivity Stability Against Temperature Range	± 3 ppm/°C (10 to 30°C)								± 5 ppm/°C (10 to 30°C)		
Pan Size	Approx. 108 × 105 mm					Approx. 170 × 180 mm			Approx. 108 × 105 mm	Approx. 170 × 180 mm	
Weight	Approx. 3.4 kg					Approx. 4.6 kg			Approx. 3.4 kg		Approx. 4.6 kg

\*1 - Indicated response time values are typical

**“Y” Series with Internal Calibration Weights**

Model	UP223Y	UP423Y	UP623Y	UP823Y	UP1023Y	UP2202Y	UP4202Y	UP6202Y	UP422Y	UP822Y	UP8201Y
Capacity	220 g	420 g	620 g	820 g	1020 g	2200 g	4200 g	6200 g	420 g	820 g	8200 g
Minimum Display	0.001 g					0.01 g					0.1 g
Repeatability (at Weighing Capacity)	≤ 0.001 g					≤ 0.01 g			≤ 0.008 g		≤ 0.08 g
Linearity	± 0.002 g		± 0.003 g		± 0.02 g			± 0.01 g		± 0.1 g	
Response Time <sup>(*)</sup>	Approx. 1 sec.								Approx. 0.6 to 1.0 sec.		
Sensitivity Stability Against Temperature Range	± 3 ppm/°C (10 to 30°C)								± 5 ppm/°C (10 to 30°C)		
Pan Size	Approx. 108 × 105 mm					Approx. 170 × 180 mm			Approx. 108 × 105 mm	Approx. 170 × 180 mm	
Weight	Approx. 2.7 kg					Approx. 2.9 kg			Approx. 2.7 kg		Approx. 2.9 kg

\*1 - Indicated response time values are typical

**ELECTRONIC ANALYTICAL & TOP LOADING BALANCE**



**AT-R SERIES**

Basic Model with Improved Convenience.

- Capacity range: 62g to 320g.
- Readability: 0.1mg.
- Easy settings enable responsiveness and stability to be freely changed.
- Basic Analytical balance equipped with 2 interfaces: USB and RS232C.
- Prevent Human error by direct transfer of weight values to the computer.
- AT-R Series balances have been shown to operate with PLCs from major companies.
- Addition of ionizer increases measurement reliability.



**TW/TX/TXB SERIES**

Extremely capable and easy to operate.

- Capacity range: 220g to 6.2kg.
- Readability: 0.001g, 0.001ct (0.0002g), 0.01g, 0.1g.
- Easy to operate key layout.
- Piece counting function.
- Backlight LCD.
- Carat Balance



**BL SERIES**

High-resolution balances made affordable.

- Capacity range: 220g to 3.2kg.
- Readability: 0.001g, 0.01g, 0.1g.
- Piece counting function.
- Analog bar graph display.
- Change among many weighing units and functions with a single touch.
- Data Transfer Port.
- Equipped with a Square Pan for Ease of Operation.

**MOISTURE BALANCE**



**MOC63U**

Makes moisture content measurements quick and easy.

- Next-Generation Mass Sensor: UniBloc.
- Windows Direct Function.
- Backlit LCD.
- RS232C interface.
- USB Interface.
- In-Built Halogen Heater for moisture measurements.

**A Total of Five Modes Makes This Balance Compatible with a Variety of Sample Measurements**

- **Ending Modes**  
Automatic/Timed Ending Mode.
- **Alternate Drying Modes**  
Rapid/Slow/Step Drying Mode.



**MOC-120H**

Measure the Moisture Ratio of even large or large amounts of samples.

- The moisture ratio is found by heating the sample with the built-in infrared heater.
- The sample pan measures 130 mm in diameter, which is optimal for large amounts of samples.
- Importing results to a PC is easy (equipped with the Balance Keys function).
- Equipped with the UniBloc aluminum block mass sensor.
- Next-Generation Mass Sensor: UniBloc.
- Windows Direct Function.
- Backlit LCD.





### Static Remover (Ionizer)

- Static charge on a sample or in the container can cause fluctuations in weight.
- Stablo-AP provides reliable measurement by removing static electricity.
- AC Corona discharge method for fast Ionization (1 Second typically).
- Can be used easily in handheld form, setting up on stand, or being fixed within a balance.
- An excellent solution against static.



### Electronic Printers

Enhanced support for ISO/GLP/GMP.

- Enhanced visibility for OLED Display.
- Includes functionality for preventing date alterations.
- Supports GLP/GMP using password protection- based date/time alteration prevention.
- Powered by Rechargeable Batteries.
- Status Display with Enhanced Visibility for OLED Display.

### Specific Gravity Analyzer

Measures a variety of gravity values with the Immersion Method.



- Capable of automatically calculating and displaying specific gravity values.
- Liquid density can also be measured by using an optional sinker.

**TEXTURE ANALYZER**

**SHIMADZU**  
Excellence in Science



Shimadzu presents the more convenient to use Next Generation Stand-Alone High Precision Table Top Type Texture Analyzer / UTM for the testing of materials. It brings exciting new dimension of quick, efficient testing to busy labs that need to improve productivity while maintaining quality.

EZ Test series comes with greater ease of operation through stand-alone or control by PC/Trapezium X Software, higher precision & accuracy of Interchangeable load cells from 1N/100g - 5kN/500kg, longer travel distance from 500mm - 920mm, ultra-high speed testing of 0.001-2000 mm/min & 1500 / 3000 mm/min return speed, automatic load calibration, accessible controls and comprehensive safety.

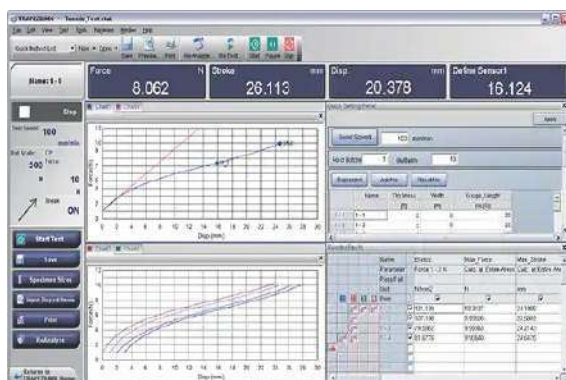
- Light weight and compact design.
- Single column, Finger-tip operation.
- Max capacity 500N & 5kN model.
- Travel upto 920mm.
- Fast return speed.
- Wide speed range 0.001 to 2000mm/min.
- Automatic load calibration.
- Crosshead speed accuracy  $\pm 0.1\%$ .
- High speed sampling of 1msec.
- Standalone operation without PC.
- USB interface for PC/Laptop.
- Touch load alarm.
- High precision load cell  $\pm 0.5\%$  of indicated value within 1/500 ~ 1/1 of indicated force.

**A wealth of specialized jigs suitable for Product Test in Diverse Fields**

Physical evaluation testing is now required in more fields than ever before. EZ Test offers an ample selection of specialized jigs and features to support a wide variety of customer requirements with special jigs and applications for a number of fields, including foods, pharmaceuticals, medical devices, cosmetics, house hold items, packaging, automotive, electrical machinery & electronics and rubber & plastics, etc.

**TRAPEZIUM X – Cutting Edge Software for Testing Machines**

Trapezium X provides a state of the art user interface, comprehensive functions and easy to use design to improve the efficiency of your testing.



**TRAPEZIUM X – Cutting Edge Software for Testing Machines**

Trapezium X software is ideal for measuring the texture of foods, evaluating various quality parameters, or measuring the physical properties of pharmaceuticals, cosmetics, and other specimens. It allows creation of user-defined control patterns that enable creation of data processing parameters specialized for foods, such as hardness, brittleness, and energy.

Compression tests (piercing, penetration, and break analysis tests), tensile tests, texture tests (two-bite method), indentation tests, gel strength tests, shear/cutting tests, adhesiveness tests, hardness tests, and more.



**Packaging**



**Food Texture**



**Plastics**



**Pharmaceuticals**



**Range of Jigs**



**Easy Control**

Since 1967

JIGS FOR EVALUATING TEXTURES



Compression Test on Bread



Surface Hardness Test on Apple



Hardness Test on Butter



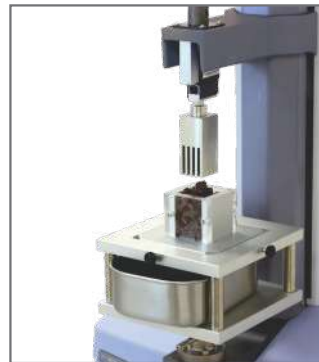
Viscoelasticity Test on Gelatin



Shear Test on Sausage



Compression Shear Test on Cereal



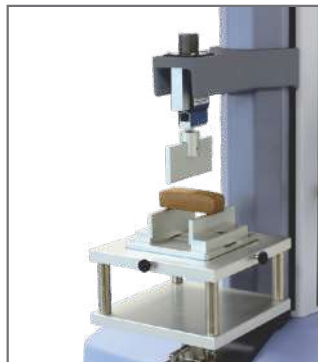
Compression Shear Test on Beans



Shear Test on Butter



Spreadability Test on Margarine



Three-Point Bending Test on Cookies



Break Strength Test on Potato Chips



Crush Test on Fruits



Extrusion Force Test on Liquids



Teeth Shear Test on Potato Croquette



Hardness Test on Lipstick



Testing Adhesive Bandages



# VISCOSITY | RHEOLOGY | TEXTURE



Since 1967

## B-ONE PLUS



Intuitive and powerful, the new B-ONE PLUS will surprise you with its extended measuring range in LR version or with its optional temperature sensor.

- 7" Touch Screen Display.
  - Wide Speed Range upto 250rpm.
  - Rotating Spring Less Technology.
  - Robust Ball Bearing Suspension.
  - SS316 Spindles.
  - Bayonet Fitting for Quick & EZ Spindle Connection.
  - Direct measure with Time to Stop.
  - Built-in USER Mode & LOCK Mode.
  - Built-in USB Port for Data Transfer.
  - Torque gage on display
  - Speed or shear rate control
  - Units: cP (Centipoise), mPa.s/Pa.s(Poise)
  - Displays: Viscosity, Speed, Torque(%), Shear Stress, Shear Rate, Time, Temperature (Optional probe required)
  - Auto Range (Min. & Max. Viscosity) (Range depends on speed & spindle selected)
- Two Viscometer Ranges
    - LV & RV in 1 Viscometer (LR)
    - RV, HA - 5HB in 1 Viscometer (HR)
  - Exactly same matching comparing results

Model	VISCOSITY RANGE cP (mPa•s)		SPEEDS			
	Min.	Max.	Accuracy	Repeatability	RPM	No. of Speeds
B-ONE PLUS LR (Low Range LV-RV)	1*	22M	±1% of FSR	+/-0.2%	0.1-250	UNLIMITED
B-ONE PLUS HR (High Range RV, HA-HB)	33*	240M	±1% of FSR	+/-0.2%	0.1-250	UNLIMITED
B-ONE PLUS HR / KU	40KU	140KU	±1% of FSR	+/-0.2%	0.1-250	UNLIMITED

\* Can reach 1 mPa•s (LR) & 33 mPa•s (HR/Standard) with MS ULV

**FIRST PLUS**



With its expanded programming possibilities and increased modularity, the FIRST PLUS will be the ideal tool for your application whether you use it alone or with its software

- 7" Touch Screen Display.
- Wide Speed Range upto 250rpm.
- Rotating Spring Less Technology.
- Robust Ball Bearing Suspension.
- SS316 Spindles.
- Bayonet Fitting for Quick & EZ Spindle Connection.
- Direct measure with Time to Stop.
- Built-in Temperature Probe.
- Built-in USER Mode & LOCK Mode.
- Built-in USB & RS232 Port for PC/Printer Connection.
- Torque gage on display.
- Integrated temperature probe.
- Compatible with RheoTex software (21 CFR).
- Speed or shear rate control.
- Units: cP (Centipoise), mPa.s/Pa.s(Poise)
- Displays: Viscosity, Speed, Torque(%), Shear Stress, Shear Rate, Time, Temperature
- Auto Range (Min. & Max. Viscosity) (Range depends on speed & spindle selected)

- Two Viscometer Ranges
  - LV & RV in 1 Viscometer (LR)
  - RV, HA - 5HB in 1 Viscometer (HR)
- Exactly same matching comparing results

Model	VISCOSITY RANGE cP (mPa•s)		SPEEDS			
	Min.	Max.	Accuracy	Repeatability	RPM	No. of Speeds
FIRST PLUS LR (Low Range LV-RV)	1*	22M	±1% of FSR	+/-0.2%	0.1-250	UNLIMITED
FIRST PLUS HR (High Range RV, HA-HB)	33*	240M	±1% of FSR	+/-0.2%	0.1-250	UNLIMITED

\* Can reach 1 mPa•s (LR) & 33 mPa•s (HR/Standard) with MS ULV



FIRST PRO PLUS



FIRST PRO has the same enhanced programming capabilities as the most complete instrument to maximize the repeatability of your measurements.

- Inbuilt software for programming.
- Direct measure with time to stop.
- User and locked mode.
- Data recording and USB transfer.
- Torque gage on display.
- Integrated temperature probe.
- Printer connection.
- Compatible with RheoTex software (21 CFR).
- Display of viscosity limits according to mobile and speed.
- Speed or shear rate control.
- Direct control of temperature unit.
- Multistep method.
- LIMS function.

- Two Viscometer Ranges
  - LV & RV in 1 Viscometer (LR)
  - RV, HA - 5HB in 1 Viscometer (HR)
- Exactly same matching comparing results

Model	VISCOSITY RANGE cP (mPa•s)		SPEEDS			
	Min.	Max.	Accuracy	Repeatability	RPM	No. of Speeds
FIRST PRO LR (Low Range LV-RV)	1*	22M	±1% of FSR	+/-0.2%	0.1-250	UNLIMITED
FIRST PRO HR (High Range RV, HA-HB)	33*	240M	±1% of FSR	+/-0.2%	0.1-250	UNLIMITED

\* Can reach 1 mPa•s (LR) & 33 mPa•s (HR/Standard) with MS ULV

**FIRST PRODIG**



The viscometer with a 7 " touch screen allows you to create and save your measurement methods, display results or curves, analyse your data, print reports, manage users and protect data.

- Speed or shear rate control.
- Inbuilt software for programming.
- Constant, Multistep or ramp method.
- Direct curve on display.
- Direct analysis with regression.
- Direct report editing.
- Direct measure with time to stop.
- User and locked mode.
- Data recording and USB transfer.
- Torque gage on display.
- Integrated temperature probe.
- Printer connection.
- Compatible with RheoTex software.
- Display of viscosity limits according to mobile and speed.
- Direct control of temperature unit.
- LIMS function.
- QC limits function.

- Two Viscometer Ranges
  - LV & RV in 1 Viscometer (LR)
  - RV, HA - 5HB in 1 Viscometer (HR)
- Exactly same matching comparing results

Model	VISCOSITY RANGE cP (mPa•s)		SPEEDS			
	Min.	Max.	Accuracy	Repeatability	RPM	No. of Speeds
FIRST PRODIG LR (Low Range LV-RV)	1*	22M	±1% of FSR	+/-0.2%	0.1-250	UNLIMITED
FIRST PRODIG HR (High Range RV, HA-HB)	33*	240M	±1% of FSR	+/-0.2%	0.1-250	UNLIMITED

\* Can reach 1 mPa•s (LR) & 33 mPa•s (HR/Standard) with MS ULV

FIRST PRODIG CP1000



The FIRST PRODIG CP1000 offers unparalleled ease of use and modularity. It incorporates a support for cone-plate measurements. It is perfectly suited to measurements at ambient temperature and offers the possibility to control temperature of the sample when combined with a circulating bath (not included). Its versatility allows it to use other measuring mobiles such as MS-RV, MS KREBS or MS VANE.

- Touch Screen Display.
- Wide Speed Range upto 250rpm.
- Rotating Spring Less Technology.
- Robust Ball Bearing Suspension.
- SS316 Spindles.
- CP-1000 stand for cone-plate measurement.
- Quick attachment with AC265 coupling.
- Manual lift for gap adjustment.
- Speed or shear rate control.
- Inbuilt software for programming.
- Constant, Multistep or ramp method.
- Direct curve on display.
- Direct analysis with regression.
- Direct report editing.
- Direct measure with time to stop.
- User and locked mode.
- Data recording and USB transfer.
- Torque gage on display.
- Integrated temperature probe.
- Printer connection.
- Compatible with RheoTex software(21 CFR).
- Display of viscosity limits according to mobile and speed.
- LIMS function.
- QC limits function.

- Multi Viscometer Range  
- (CP & Rotational Viscometer) in 1 Viscometer CP, RV, VANE, Krebs-KU
- Exactly same matching comparing results

Model	VISCOSITY RANGE cP (mPa•s)		Accuracy	Repeatability	SPEEDS	
	Min.	Max.			RPM	No. of Speeds
FIRST PRODIG CP 1000	3	80M**	±1% of FSR	±0.2%	0.1-250	UNLIMITED

\*\* According to Cone-plate MS CP

**RM100 PLUS**



The RM100 PLUS is the viscometer with largest speed and torque range available on market. Create your methods and store your results in relation with your application.

- Speed or shear rate control.
- Huge speed and torque range.
- Direct control of temperature unit.
- Inbuilt software for programming.
- Direct measure with time to stop.
- User and locked mode.
- Data recording and USB transfer.
- Torque gage on display.
- Integrated temperature probe.
- Printer connection.
- Compatible with RheoTex software (21 CFR).
- Display of viscosity limits according to mobile and speed.
- Multistep method.
- LIMS function.
- QC limits function.
- Touch screen display.
- Wide speed range 1500 rpm.
- Rotating spring less technology.
- Robust ball bearing suspension.
- SS 316 spindles.

Model	VISCOSITY RANGE cP (mPa•s)				SPEEDS	
	Min.	Max.	Accuracy	Repeatability	RPM	No. of Speeds
RM100 PLUS	1	780M*	±1% of FSR	±0.2%	0.1-1500	UNLIMITED

M for million / \* According to measuring system.



RM100 CP-1000 PLUS



Equipped with a fluid circulation for temperature control (bath not included), the RM100 CP1000 PLUS will allow you to perform cone-plate and beaker measurements using the MS RV, MS VANE or MS KREBS mobiles.

- 7" Touch Screen Display.
- Wide Range of CP01 - CP10 Spindles.
- Wide Range of CP40Z - CP52Z Spindles.
- Robust Ball Bearing Suspension.
- CONE/PLATE Springless Technology.
- AC265 coupling system for SS316 Cone Plate.
- SS316 Spindles (CP/RV/VANE).
- Bayonet Fitting for Quick & EZ Spindle Connection.
- Removable Bottom Plate. (w/integrated temp. probe)
- Manual lift for gap adjustment.
- Guaranteed Easy Cleaning.
- Programming and Recording Method.
- CP1000 Stand for C/P measurement.
- Built-in USER Mode & LOCK Mode.
- Built-in USB & RS232 Port for PC/Printer Connection.
- Optional RheoTex software (21 CFR).
- Units: cP (Centipoise), mPa.s/Pa.s(Poise)
- Speed or shear rate control.
- Inbuilt software for programming / Printer connection.
- Direct measure with time to stop.
- Torque gage on display.
- Integrated temperature probe.
- Display of viscosity limits according to mobile and speed.
- Multistep method.
- LIMS function / QC limits function.
- Displays: Viscosity, Speed, Torque(%), Shear Stress, Shear Rate, Time, Temperature
- Auto Range (Min. & Max. Viscosity) (Range depends on speed & spindle selected)

- Multi Viscometer Range
  - (CP & Rotational Viscometer) in 1 Viscometer CAP, CP, RV, HA-HB, KU
- Cover High Torque 181,000 dyne cm ICI Specifications method
- Covers Low Torque 7,970 dyne cm (123CAP)
- Wide Shear Range! 1-20,000 sec<sup>-1</sup>
- Exactly same matching comparing results

Model	VISCOSITY RANGE cP (mPa•s)		Accuracy	Repeatability	SPEEDS	
	Min.	Max.			RPM	No. of Speeds
RM100 CP-1000 PLUS	1	190M**	±1% of FSR	±0.2%	0.1-1500	UNLIMITED

M for million / \*\* According to MS CP spindle

**RM100 CP-2000 PLUS CONE & PLATE VISCOMETER**



Cone and Plate measuring systems are adapted for samples in limited quantities and difficult to clean. With maximum shear rate up to 20,000 s<sup>-1</sup>, the RM100 CP2000 PLUS will fit all your applications.

- 7" Touch Screen Display.
- Wide Range of CP01 - CP10 SS316 Spindles.
- Wide Range of CP40Z - CP52Z SS316 Spindles.
- Robust Ball Bearing Suspension.
- AC265 coupling system for Cone Plate.
- Removable Bottom Plate.(w/integrated temp. probe)
- Guaranteed Easy Cleaning.
- CONE/PLATE Springless Technology.
- Programming and Recording Method.
- Direct report editing.
- Huge speed and torque range.
- Direct control of temperature unit.
- Inbuilt software for programming.
- Printer connection.
- Data recording & USB Transfer
- Built-in USER Mode & LOCK Mode.
- Built-in USB & RS232 Port for PC/Printer Connection.
- Optional RheoTex software (21 CFR).
- Units: cP (Centipoise), mPa.s/Pa.s(Poise)
- Multistep method.
- LIMS function.
- QC limits function.
- Displays: Viscosity, Speed, Torque(%), Shear Stress, Shear Rate, Time, Temperature
- Auto Range (Min. & Max. Viscosity) (Range depends on speed & spindle selected)

- Multi Viscometer Range
  - (CP & Rotational Viscometer) in 1Viscometer CP models & CAP models
- Cover High Torque 181,000 dyne cm ICI Specifications method
- Covers Low Torque 7,970 dyne cm (123CAP)
- Wide Shear Range! 1-20,000 sec<sup>-1</sup>
- Exactly same matching comparing results

Model	VISCOSITY RANGE cP (mPa•s)		Accuracy	Repeatability	SPEEDS	
	Min.	Max.			RPM	No. of Speeds
RM100 CP-2000 PLUS	1	190M	±1% of FSR	±0.2%	0.1-1500	UNLIMITED

M for million

**GT-300 PLUS GEL TIMER**



**Measure your Gel Time on one click**

The GT 300 PLUS is a «Gel Timer» to measure all curing times of your products. Combined with disposable measuring systems and temperature control, it adapts to all your expectations for a very competitive cost per measurement.

- Inbuilt software for programming
- RheoTex software included.
- Direct control of temperature unit.
- Measure with disposable hooks and cups.
- Sample temperature probe (optional).
- Low sample volume.
- Temperature ramp available.
- Display of viscosity limits according to mobile and speed.
- LIMS function.
- QC limits function.

Disposable cup  
(aluminium)  
(by 100)  
Ref. 700011



Disposable hook  
(stainless steel)  
(Vol. 50-80mL)  
(by 100)  
Ref. 700010



Disposable hook  
(steel)  
(Vol. 35-50mL)  
(by 100)  
Ref. 700040



**GT-300 PRODIG GEL TIMER**



**Measure your Gel Time on one click**

The GT300 PRODIG measures your gel time, shows curves, analyses your data and print reports. Autonomy and user-friendly, it benefits to GT300 performances with ergonomic innovations.

- Inbuilt software for programming.
- Direct curve on display.
- Direct Gel time analysis.
- Direct report editing.
- Direct control of temperature unit.
- Measure with disposable hooks and cups.
- Sample temperature probe (option).
- Low sample volume.
- Temperature ramp available.
- Display of viscosity limits according to mobile and speed.
- LIMS function.
- QC limits function.

Disposable cup  
(aluminium)  
(by 100)  
Ref. 700011



Disposable hook  
(stainless steel)  
(Vol. 50-80mL)  
(by 100)  
Ref. 700010



Disposable hook  
(steel)  
(Vol. 35-50mL)  
(by 100)  
Ref. 700040





**PORTABLE B-ONE VISCOMETER**



The PORTABLE B-ONE is the ideal tool for your viscosity measurements in the workshop, production area, delivery area or outside. With one hour of battery life, it will optimize your control times and flexibility.

- Autonomy more than one hour.
- Charge indicator.
- Direct measure with time to stop.
- Usable with standard or rack stand(option).
- User and locked mode.
- Data recording and USB transfer.
- Torque gage on display.
- Display of viscosity limits according to mobile and speed.
- Speed or shear rate control.

Model	VISCOSITY RANGE cP (mPa•s)				SPEEDS	
	Min.	Max.	Accuracy	Repeatability	RPM	No.of Speeds
B-ONE Portable Viscometer	200 (15**)	240M	±1% of FSR	±0.2%	0.1-250	UNLIMITED

M for million / \*\* Can reach 15 mPa.s with MS BV.

**PORTABLE RM 100 - ON-LINE / PROCESS VISCOMETER**



No matter where, the PORTABLE RM 100 allows you to bring your viscosity measurement methods where your lab can not operate. With programming, memorization, temperature measurement and all measurement systems, all your expertise is moving!

- Autonomy more than one hour.
- Charge indicator.
- Huge speed and torque range.
- Usable with standard or rack stand (option).
- Inbuilt software for programming.
- Direct measure with time to stop.
- User and locked mode.
- Data recording and USB transfer.
- Torque gage on display.
- Integrated temperature probe.
- Printer connection.
- Compatible with RheoTex software.
- Display of viscosity limits according to mobile and speed.
- Speed or shear rate control.
- Multistep method.
- LIMS function.
- QC limits function

Model	VISCOSITY RANGE cP (mPa•s)				SPEEDS	
	Min.	Max.	Accuracy	Repeatability	RPM	No.of Speeds
RM-100 Portable Viscometer	200 (1**)	240M	±1% of FSR	±0.2%	0.1-1500	UNLIMITED

M for million / \*\* Can reach 1 mPa.s with MS DIN19

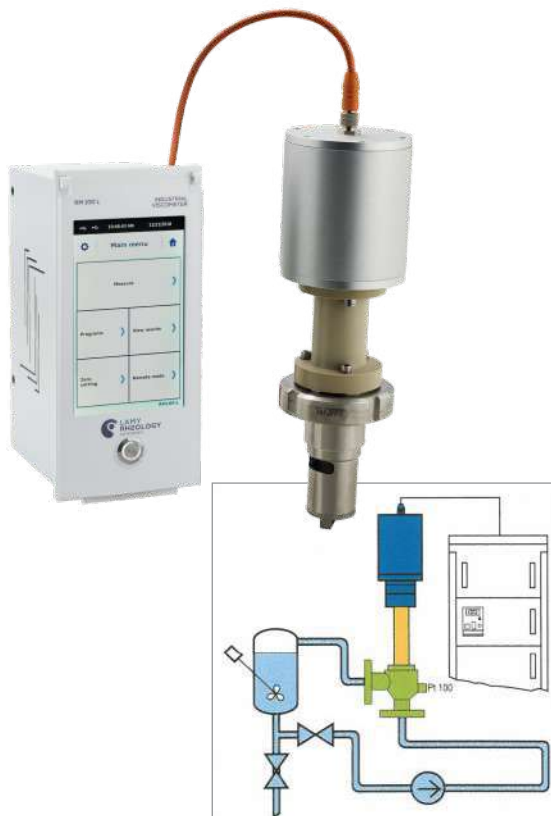
## RM100 i - ON-LINE / PROCESS VISCOMETER



The RM100 i is perfectly suited for so-called immersion use, installing it over a tank or on a support for a measurement in a pot. Only the measuring head is above the product, the electronic box can be installed more than 17 meters in a control cabinet with its 4-20mA output

- Industrial measure on large tanker.
- Continuous measurement or with time to stop.
- 4-20 mA output for external control.
- 17m maximum distance between head and box.
- Usable with standard or rack stand.
- Huge viscosity range.
- Inbuilt software for programming.
- External temperature probe (option).
- Printer connection.
- Compatible with RheoTex software.
- Display of viscosity limits according to mobile and speed.
- Speed or shear rate control.
- Multistep method.
- LIMS function.
- QC limits function

## RM 100 L - IN-LINE / PROCESS VISCOMETER



The online viscosity measurement of the RM100 L guarantees continuous control for immediate action in production.

Whatever the flow rate, the viscosity or the diameter of your pipe, this viscometer will be able to adapt by guaranteeing you a measurement according to laboratory's norms.

- Industrial on-line measurement.
- Continuous measurement or with time to stop.
- 4-20 mA output for external control.
- Magnetic bearing for sealing.
- 30m maximum distance between head and box.
- Huge viscosity range.
- Inbuilt software for programming.
- External temperature probe (option).
- Printer connection.
- Compatible with RheoTex software.
- Display of viscosity limits according to mobile and speed.
- Speed or shear rate control.
- Multistep method.
- LIMS function.
- QC limits function

## RM 200 PLUS RHEOMETER



### The Rheology at your fingertips

Thanks to its large storage capacity and its easy programming, the rheometer RM200 PLUS allows you to realize all your measurements of flow curves, yield point, thixotropic, analysis without software.

- Constant, Multistep or ramp method.
- Direct analysis with regressions.
- Direct control of temperature unit.
- Huge viscosity range.
- Speed or shear rate control.
- Inbuilt software for programming.
- Direct measure with time to stop.
- User and locked mode.
- Data recording and USB transfer.
- Torque gage on display.
- Integrated temperature probe.
- Printer connection.
- Compatible with RheoTex software.
- Display of viscosity limits according to mobile and speed.
- LIMS function.
- QC limits function.

## RM 200 CP-4000 PLUS RHEOMETER



### Optimize your rheological measurements

The motorized lift of the RM200 CP4000 PLUS allows a fast and repeatable installation of cone and plate measuring systems guaranteeing reliable rheological measurements whatever your application.

- Automatic lift for gap.
- Quick attachment with AC265 coupling.
- Constant, Multistep or ramp method.
- Direct analysis with regressions.
- Direct control of temperature unit.
- Huge viscosity range.
- Speed or shear rate control.
- Inbuilt software for programming.
- Direct measure with time to stop.
- User and locked mode.
- Data recording and USB transfer.
- Torque gage on display.
- Integrated temperature probe.
- Printer connection.
- Compatible with RheoTex software.
- Display of viscosity limits according to mobile and speed.
- LIMS function.
- QC limits function.

## DSR 500 RHEOMETER



### A new vision on your measurements

The rheometer with imposed shear rate, equipped with a 7 " touch screen to display the curves directly. And with direct report editing on a desktop printer, measuring viscosity or yield point has never been so easy!

- Direct curve on display.
- Shear rate and speed control.
- Constant, Multistep or ramp method.
- Direct analysis with regressions.
- Direct control of temperature unit.
- Huge viscosity range.
- Inbuilt software for programming.
- Direct measure with time to stop.
- User and locked mode.
- Data recording and USB transfer.
- Torque gage on display.
- Integrated temperature probe.
- Printer connection.
- Compatible with RheoTex software.
- Display of viscosity limits according to mobile and speed.
- LIMS function.
- QC limits function.

## DSR 500 CP-4000 PLUS RHEOMETER



### A rheometer to meet your requirements

With its motorized lift, built-in temperature control unit and all the features of the DSR500, this new cone-plate rheometer optimizes your measurements and guarantees high performance even without a computer!

- Automatic lift for gap.
- Quick attachment with AC265 coupling.
- Direct curve on display.
- Shear rate and speed control.
- Constant, Multistep or ramp method.
- Direct analysis with regressions.
- Direct control of temperature unit.
- Huge viscosity range
- Inbuilt software for programming.
- Direct measure with time to stop.
- User and locked mode.
- Data recording and USB transfer.
- Torque gage on display.
- Integrated temperature probe.
- Printer connection.
- Compatible with RheoTex software.
- Display of viscosity limits according to mobile and speed.
- LIMS function.
- QC limits function.